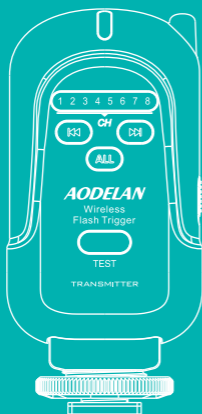


AODELAN



Wireless Flash Trigger

FT-8

无线引闪器

FT-8(R)

User Manual/使用说明书

FT-8(T)

Thank you for purchasing an AODELAN product.

AODELAN FT-8 is a simple and reliable radio flash trigger. It offers a simple way to use off-camera flash. The rotating Transmitter can be used upright or in the low-profile down position. The 8-channel transmitter and receiver units have a maximum range of 200m and feature a “fire-all” channel function.

Please read this user manual as well as the user manuals provided with your camera and flash which works with FT-8 before use.

For your safety

Before using your product, please read the following safety precaution carefully to ensure correct and safe use.

- Do not disassemble or attempt to repair it.
- Do not use the product in the presence of flammable or explosive gas.
- The product is not waterproof. Please keep away from rain, snow and high humidity conditions.
- Do not expose the product to high temperature over 45°C (e.g. left in a car trunk).
- Do not clean the product with organic solvent or alcohol-based liquid.
- Keep the product out of the reach of children.
- Consult local authorities on the proper disposal or recycling of a battery.

Declaration of Conformity USA

Product name: Wireless Flash Trigger Transmitter Trade name: AODELAN Model number: FT-8(T) FCC ID: 2AEJW-FT8 Manufacturer: Shenzhen Aodelan Technology Co., Ltd.	Product name: Wireless Flash Trigger Receiver Trade name: AODELAN Model number: FT-8(R) Manufacturer: Shenzhen Aodelan Technology Co., Ltd.
--	--

FCC Interference Statement

This device complies with part 15 of the FCC Rules. Operation is subject to the following two conditions: (1) This device may not cause harmful interference, and (2) this device must accept any interference received, including interference that may cause undesired operation.

FCC Radiation Exposure Statement

This equipment complies with FCC RF radiation exposure limits set forth for an uncontrolled environment. This device and its antenna must not be co-located or operating in conjunction with any other antenna or transmitter.

FCC Class B Compliance note

This equipment has been tested and found to comply with the limits for a Class B digital device, pursuant to Part 15 of the FCC Rules. These limits are designed to provide reasonable protection against harmful interference in a residential installation. This

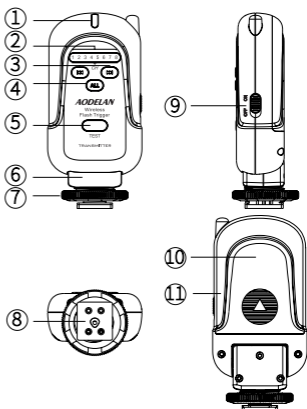
equipment generates, uses and can radiate radio frequency energy and, if not installed and used in accordance with the instructions, may cause harmful interference to radio communications. However, there is no guarantee that interference will not occur in a particular installation. If this equipment does cause harmful interference to radio or television reception, which can be determined by turning the equipment off and on, the user is encouraged to try to correct the interference by one or more of the following measures:

- Reorient or relocate the receiving antenna.
- Increase the separation between the equipment and receiver.
- Connect the equipment into an outlet on a circuit different from that to which the receiver is connected.
- Consult the dealer or an experienced radio/TV technician for help.

Parts

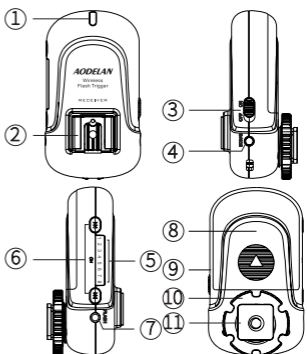
Transmitter FT-8(T)

1. Status LED
2. Channel Numbers
3. Channel Adjustment Buttons
4. Fire All Button
5. Test Button
6. Swivel Rotator
7. Locking Ring
8. Camera Hot Shoe Connection
9. Power Switch
10. Battery Cover
11. Battery Compartment



Receiver FT-8(R)

1. Status LED
2. Hot Shoe Connection
3. Power Switch
4. DC Power Port
5. Channel Numbers
6. Channel Adjustment Buttons
7. 3.5mm Output Port
8. Battery Cover
9. Battery Compartment
10. Locking Ring
11. Cold Shoe & 1/4"-20 Tripod Lug



Inserting Batteries

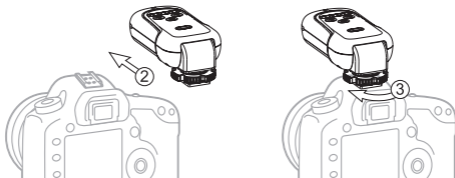
1. Press the battery cover in while pushing it away from the FT-8 transmitter or receiver. The battery cover will snap open.
2. Remove the battery cover from the FT-8.
3. Insert AA batteries as shown inside the battery compartment.
4. Replace the battery cover and push back into the locked position.

Turning Transmitter and Receiver On/Off

1. To turn on the FT-8 transmitter or receiver - move the power switch to the "ON" position.
2. To turn off the FT-8 transmitter or receiver - move the power switch to the "OFF" position.

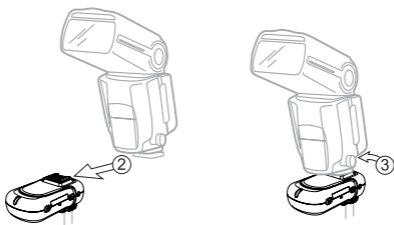
Connecting the FT-8 transmitter to the camera hot shoe

1. Turn off the camera and FT-8 transmitter.
2. Slide the FT-8 transmitter into the camera's hot shoe mount.
3. Turn the FT-8 locking ring until tight.
4. Turn on the camera, FT-8 transmitter and set the shooting mode of the camera to Manual.



Connecting a flash to the FT-8 Receiver hot shoe

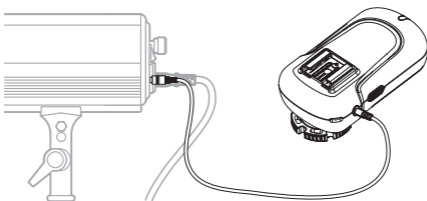
1. Turn off the flash and the FT-8 receiver.
2. Slide the flash into the receiver's hot shoe mount.
3. Lock the flash with the flash's locking mechanism.
4. Turn on the flash and the FT-8 receiver. *
5. Set the flash to Manual mode.



Connecting a flash/strobe to the FT-8 receiver by sync cable

1. Turn off the flash/strobe and the FT-8 receiver.
2. Connect a cable to the receiver's 3.5 mm Sync Port.
3. Connect the opposite end of the cable to a flash or studio strobe (a 6.3 mm adapter is included for studio strobes with larger ports).
4. Turn on the flash/strobe and the FT-8 receiver. *
5. Set the flash/strobe to Manual mode.

** It is not unusual for the flash to discharge once after turning on the FT-8*



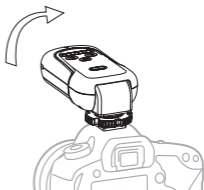
Precautions for Use

- Turn off all devices – flashes/strobes, cameras, and AODELAN FT-8 transmitters and receivers - when connecting and disconnecting devices.
- FT-8 is designed to work with camera and flash in manual mode and has no TTL functions.
- FT-8 receiver will fire hot shoe flashes that are triggered from the center contact pin.
- Some third party flashes that are triggered from auxiliary hot shoe pins will not be triggered when used on the FT-8 receiver hot shoe.
- Flashes will be triggered via sync cable if the flash has a sync port.

Raising and Lowering the Transmitter

The FT-8 transmitter can be used in an up or down position.

1. To lower the transmitter: After mounting, gently push the FT-8 transmitter forward to use in the down position. The transmitter will lock in place in the down position.
2. To raise the transmitter: Gently pull the FT-8 transmitter up. The transmitter will lock in place in the up position.



Setting Channels

1. The FT-8 has eight channel settings.
2. Press the Channel Adjustment Buttons (left or right) on the transmitter or receiver to set the channel.
3. Channel Numbers 1 to 8 will illuminate on the transmitter or receiver to indicate which channel the device is set to.
4. FT-8 transmitters will only trigger receivers set to the same channel.

Fire All Channels Switch

1. To fire all flashes or strobes on receivers set to different channels press the Fire All Button on the transmitter.
2. The Channel Numbers 1 to 8 will illuminate.
3. All nearby FT-8 receivers set to any channel in standby mode will fire the connected flashes/strobes.
4. To turn off Fire All mode press the Fire All Button. The channel selection will revert to its previous setting.

Test Button

- The Transmitter Test Button will test fire remote flashes/strobes.
- To Test: Press the Transmitter Test Button – flashes/strobes connected to FT-8 receivers on the same channel will fire.

Status LED

- The Status LED on the front of the FT-8 transmitter will flash green approximately every one second when in standby mode. It will turn red when a signal is being transmitted.
- The Status LED on the front of the FT-8 receiver will flash green approximately every one second when in standby mode. It will turn red when a signal is received from the transmitter.
- When battery power is low the Status LED on the transmitter or receiver will quickly flash red indicating low power and the need to change batteries.

Specifications

Frequency: 2.4 GHz

Range: Max. 200m (656 feet)

Channel: 8 channels and Fire All Function

Power: 2 x AA batteries (Transmitter and Receiver),
5V DC (Receiver)

Max. sync speed: 1/250 sec**

Antenna: internal antenna

Transmitter

Dimensions: Approx. 104 x 50 x 35mm (4.1 x 2.0 x 1.4
in)

Weight: Approx. 68g (2.4 oz) (without batteries)

Receiver

Dimensions: Approx. 88 x 50 x 40mm (3.5 x 2.0 x 1.6
in)

Weight: Approx. 65g (2.3 oz) (without batteries)

Specifications and design are subject to change
without notice.

***On compatible cameras/flashes*

感谢您购买奥德兰产品。

奥德兰 FT-8 是一款操作简便、品质可靠的无线电引闪器。它为离机闪光灯的使用提供了一种简便的方法。发射器可以直立使用，也可旋转至平放位置使用。发射器和接收器有 8 个频道并具有“全频道引闪”功能，工作距离最远可达到 200 米。

使用前，请阅读本使用说明书以及与 FT-8 搭配使用的相机和闪光灯随附的使用说明书。

安全须知

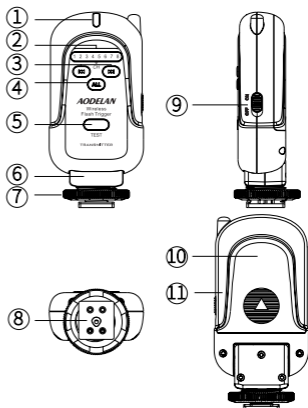
请在使用前仔细阅读“安全须知”，并以正确的方法使用。

- 请勿试图自行拆开或进行维修。
- 请勿在有可能起火、爆炸的场所使用本产品。
- 本产品不具备防水特性，请远离雨、雪等高湿度的场合。
- 请勿将产品放置在超过 45°C 的高温环境下，比如汽车尾箱内。
- 请勿使用有机溶剂或含酒精的液体来清洁该产品。
- 请勿在婴幼儿伸手可及之处保管产品。
- 有关电池的妥善处理 and 回收，请咨询地方当局。

部件名称

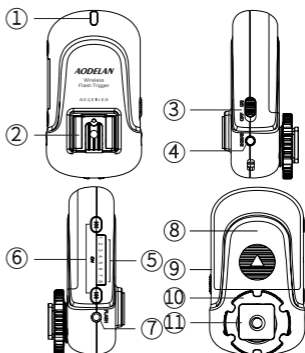
发射器 FT-8(T)

1. LED 指示灯
2. 频道数字
3. 频道调整按钮
4. 全频道触发按钮
5. 测试按钮
6. 旋转装置
7. 锁环
8. 相机热靴连接端口
9. 电源开关
10. 电池盖
11. 电池仓



接收器 FT-8(R)

1. LED 指示灯
2. 热靴连接端口
3. 电源开关
4. DC 电源端口
5. 频道数字
6. 频道调整按钮
7. 3.5mm 输出端口
8. 电池盖
9. 电池仓
10. 锁环
11. 冷靴 & 1/4" -20 三脚架螺口



安装电池

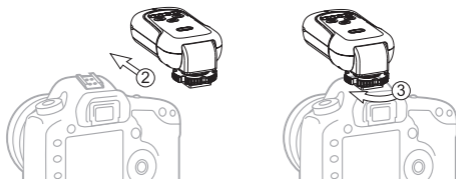
1. 按住 FT-8 发射器或接收器上的电池盖，按箭头所指方向滑动电池盖，电池盖将会开启。
2. 移开电池盖。
3. 参照电池仓内所示装入 AA 电池。
4. 关上电池盖并滑回锁定处。

开启 / 关闭发射器和接收器

1. 开启 FT-8 发射器或接收器 - 将电源开关滑至 "ON" 处。
2. 关闭 FT-8 发射器或接收器 - 将电源开关滑至 "OFF" 处。

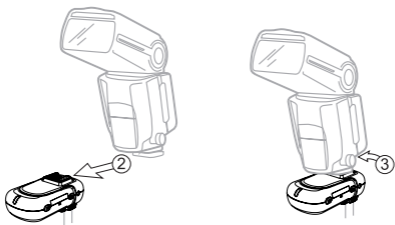
将 FT-8 发射器连接到相机热靴插座上

1. 关闭相机和 FT-8 发射器。
2. 将 FT-8 发射器插入相机的热靴插座。
3. 旋转 FT-8 发射器锁环直至锁紧。
4. 开启相机和 FT-8 发射器。
5. 将相机的拍摄模式设置为手动。



将闪光灯连接到 FT-8 接收器上的热靴连接端口

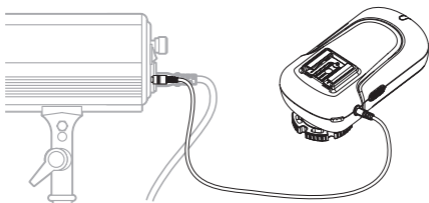
1. 关闭闪光灯和 FT-8 接收器。
2. 将闪光灯插入 FT-8 接收器的热靴连接端口。
3. 按照闪光灯的锁紧机制锁紧闪光灯。
4. 开启闪光灯和 FT-8 接收器。*
5. 将闪光灯设置为手动模式。



通过同步线连接 FT-8 接收器和闪光灯 / 影楼灯

1. 关闭闪光灯 / 影楼灯和 FT-8 接收器。
2. 将线的一端插入接收器上的 3.5mm 同步端口。
3. 将线的另一端连接至闪光灯 / 影楼灯（内附用于较大端口的影楼灯的 6.3mm 转接头）。
4. 开启闪光灯 / 影楼灯和 FT-8 接收器。*
5. 将闪光灯 / 影楼灯设置为手动模式。

* 开启 FT-8 时闪光灯闪光一次属正常现象。



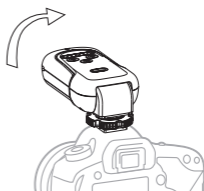
使用注意事项

- 连接或断开装置时，请关闭所有装置的电源 - 闪光灯 / 影楼灯、相机、奥德兰 FT-8 发射器和接收器。
- FT-8 工作时，请将相机和闪光灯调为手动模式，FT-8 没有 TTL 功能。
- FT-8 接收器可以触发由中心触点触发的热靴闪光灯。
- 其他一些由辅助热靴触点触发的第三方闪光灯连接在 FT-8 接收器热靴上将不能被触发。
- 如果闪光灯有同步端口，可以通过连接同步线被触发。

调节 FT-8 发射器位置 - 平放 / 直立

FT-8 发射器的位置可以调节 - 平放或直立。

1. 发射器平放：将发射器安装好后，向前轻轻地推动发射器将会使发射器转动到平放的位置，发射器将会自动锁定。
2. 发射器直立：向上轻轻地拉发射器将会使发射器转动到直立的位置，发射器将会自动锁定。



频道设置

1. FT-8 有八个频道可供设置。
2. 按发射器或接收器上的频道调整按钮（向左或向右）来选择频道。
3. 发射器或接收器上的频道数字 1 至 8 将会点亮，用于显示所选的频道。
4. FT-8 发射器只能触发与其处于相同频道的接收器。

全频道触发按钮

1. 要触发所有不同频道的接收器上连接的闪光灯 / 影楼灯，请按发射器上的全频道触发按钮。
2. 频道数字 1 至 8 将会点亮。
3. 附近所有处于待机模式的任一频道的 FT-8 接收器上的闪光灯 / 影楼灯都将被触发。
4. 再次按全频道触发按钮将会关闭全频道触发模式，发射器将会恢复到之前所设定的频道。

测试按钮

- 发射器上的测试按钮将会试触发远程闪光灯 / 影楼灯。
- 测试方法：按发射器上的测试按钮 - 与发射器处于相同频道的接收器上连接的闪光灯 / 影楼灯将会被触发。

LED 指示灯

- 在待机模式下，FT-8 发射器前面的 LED 指示灯大概每 1 秒会闪一次绿光；发射器发送信号时，LED 指示灯会变为闪红光。
- 在待机模式下，FT-8 接收器前面的 LED 指示灯大概每 1 秒会闪一次绿光；接收到发射器发送的信号时，LED 指示灯会变为闪红光。
- 当发射器或接收器电池电量不足时，LED 指示灯会快速闪红光，请更换电池。

规格

频率：2.4GHz

工作范围：最大 200m

频道：8 个频道和全频道触发功能

电源：2 x AA 电池(发射器和接收器) ,5V DC (接收器)

最快同步速度：1/250s**

天线：内置天线

发射器

尺寸：约 104 x 50 x 35mm

重量：约 68g (不含电池)

接收器

尺寸：约 88 x 50 x 40mm

重量：约 65g (不含电池)

规格和设计如有变更，恕不另行通知。

**** 用于兼容的相机 / 闪光灯**



www.aodelan.net

深圳市奥德兰科技有限公司
Shenzhen Aodelan Technology Co.,Ltd.



Printed in China